

HOW TO Navigate Canada's Healthcare System



UNIVERSAL HEALTHCARE

MSP

MSP is the public provincial insurance plan. Most immigrants are eligible for MSP.



Public System
paid by taxes.

IF YOU DON'T SPEAK ENGLISH, YOU CAN FIND LANGUAGE HELP:



- Provincial Language Services.
- Umbrella Co-op (Cross Cultural Health Brokers).
- Trusted friend or family member.

BRING YOUR HEALTH INSURANCE CARD TO ALL HEALTHCARE SERVICES. SOME MIGHT NOT BE COVERED UNDER MSP.



Doctor



Imaging



Bloodworks



Medication



Dental



Eye Glasses

You might also qualify for other types of insurance.

Employer

IFHP

HOW HEALTHCARE SERVICES ARE DELIVERED

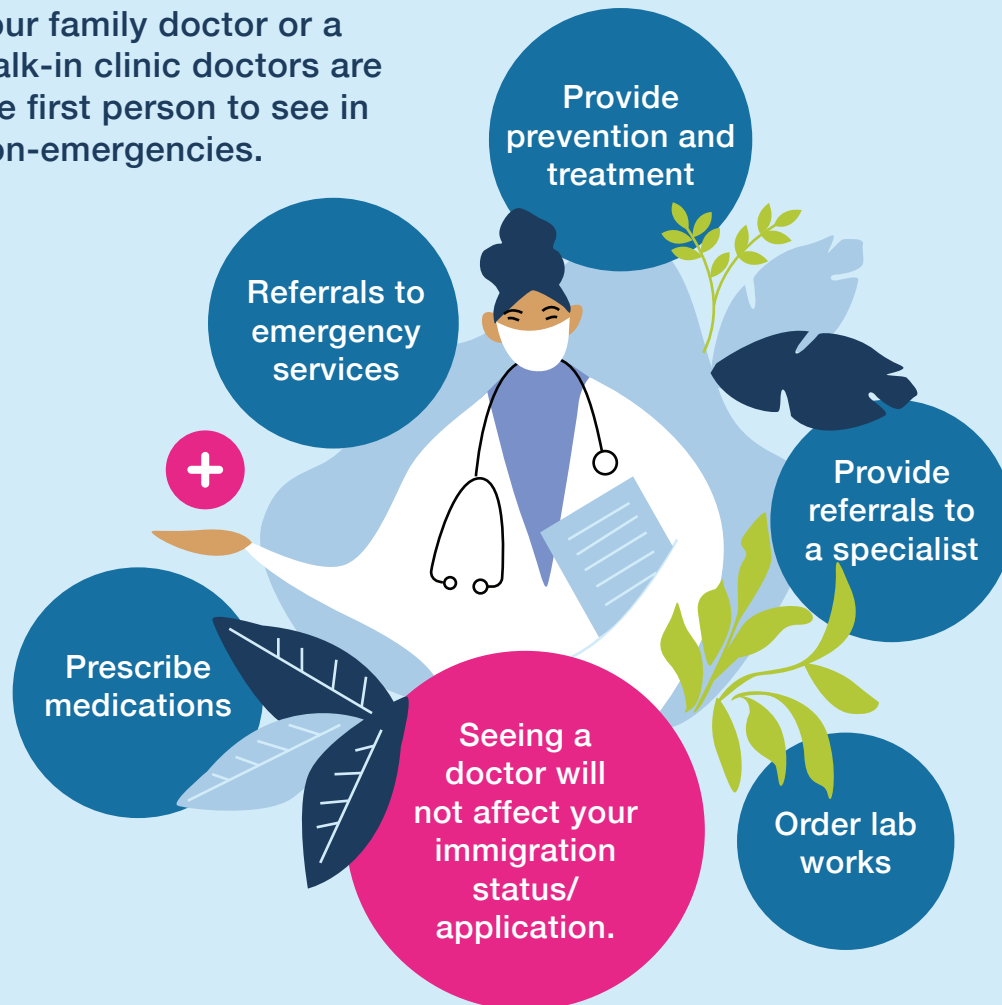


Umbrella Multicultural Health Co-op

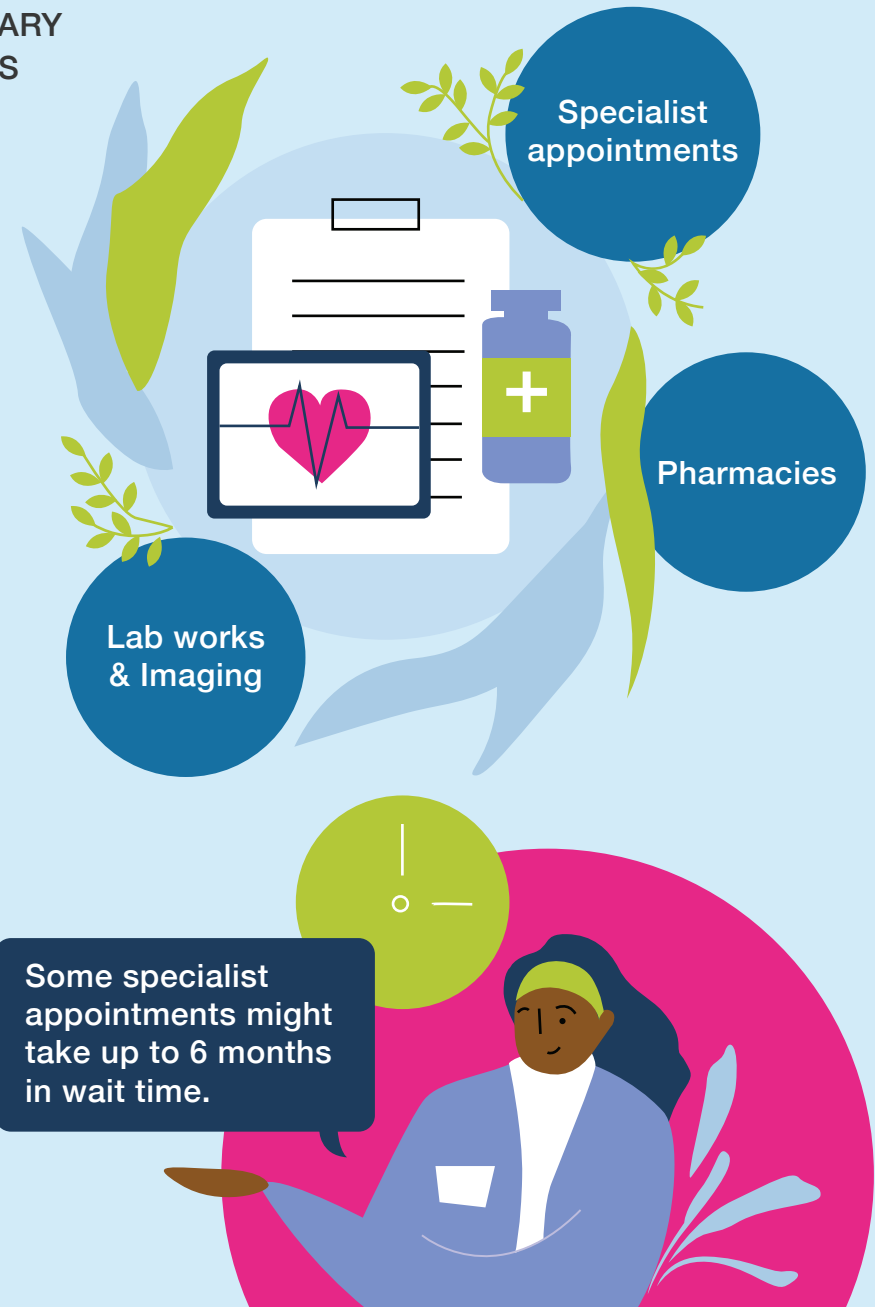
PRIMARY CARE

Finding a Family Doctor or Nurse Practitioner is important.

Your family doctor or a walk-in clinic doctors are the first person to see in non-emergencies.



SECONDARY SERVICES



EMERGENCY SERVICES AND WALK-IN CLINICS



Umbrella Multicultural Health Co-op

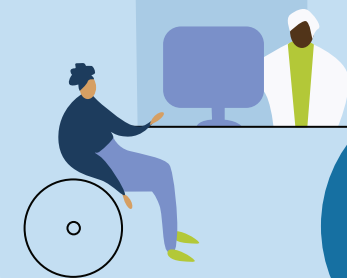
IN HEALTH EMERGENCIES



All emergency services are free

Emergency Department or 9-1-1 for life threatening conditions.

Urgent Primary Care Centre for non-life threatening conditions.



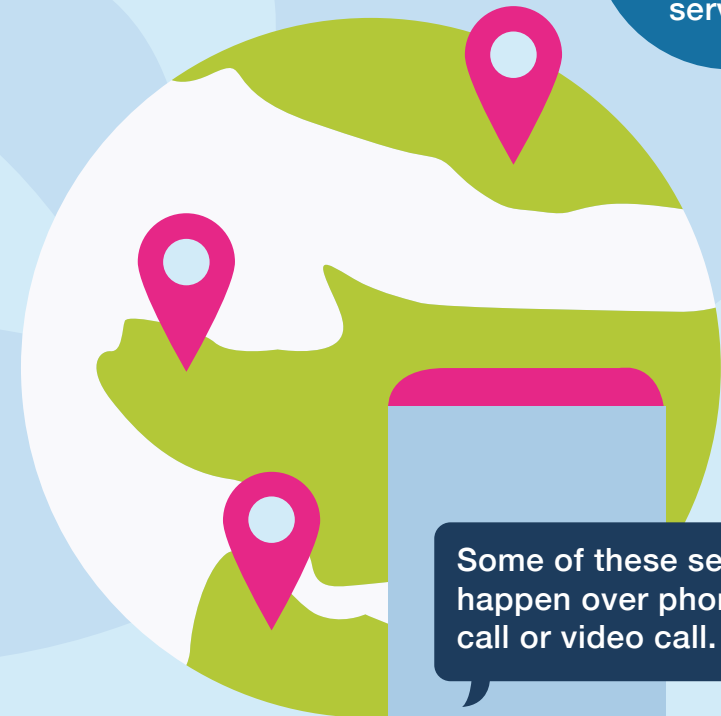
language services provided at emergency services

IN NON-EMERGENCIES BUT YOUR FAMILY DOCTOR IS NOT AVAILABLE

Visit a walk-in clinic.



8-1-1 (language services available)



Some of these services happen over phone call or video call.